

Service manual Euromat B8-EM 400V 50Hz

Version: 2.00

Ident:

Series:

Part-Number: 101171



Chapter

baking chamber Euromat B8-EM 400V 50Hz - V:
door Euromat B8-EM 400V 50Hz - V:
electric slide EM IS Euromat B8-EM 400V 50Hz - V:
electric slide EM manual Euromat B8-EM 400V 50Hz - V:
frame Euromat B8-EM 400V 50Hz - V:
installation-room Euromat B8-EM 400V 50Hz - V:
operating panel EM IS Euromat B8-EM 400V 50Hz - V:
operating panel EM manual Euromat B8-EM 400V 50Hz - V:

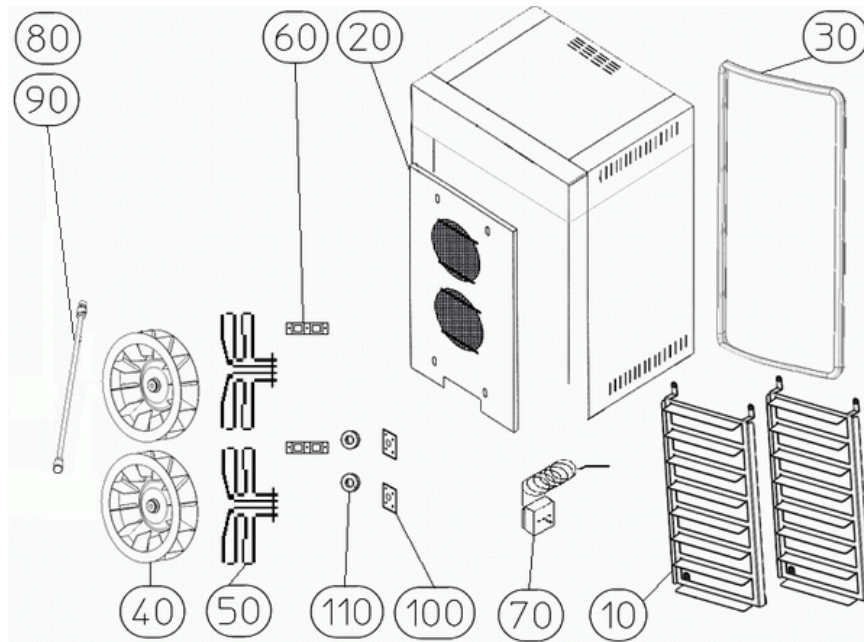
Service manual baking chamber Euromat B8-EM 400V 50Hz

Version:

Ident:

Series:

Part-Number:



Chapter

tray runners Euromat B8-EM 400V 50Hz - V:

- 36287 - thermo element Typ K
- 38740 - seal for blind plug
- [020] - 29922 - ventilation cover B8-EM
- [030] - 38604 - door seal
- [040] - 33862 - fan wheel
- [050] - 34960 - heater 3000 W
- [060] - 36117 - seal heater
- [070] - 26291 - blind plug stainless steel
- [070] - 37981 - capillary tube regulator
- [080] - 02524 - steam pipe connection
- [090] - 27384 - steam pipe connection B8-EM
- [100] - 04800 - sealing plate
- [110] - 105206 - seal motor shaft
- [111] - 34047 - seal motor shaft

Part: thermo element Typ K

Part-Number: 36287

=> replaced by 104610 The thermo element type K is used as an oven probe. The oven probe controls the oven temperature. The working range is between 30 - 250°C. Please note the polarity (+/-) when replacing the thermo elements. To prevent false measurements the probe must be inserted as far as it will go. Ensure that the oven probe feeds through the fan cover into the oven. The probe must not be in contact with the fan cover - false measurements or even deactivating the safety chain may be the result of coming in contact. If the probe is too short and does not fit into the oven, a probe extension is necessary. Please notice the assembly instructions MH_14-0511-017.



Part: seal for blind plug

Part-Number: 38740

This seal is used for devices with blind plug, that means without ProClean. The seal has to be changed from the baking chamber.



Part: ventilation cover B8-EM

Part-Number: 29922



Part: door seal

Part-Number: 38604

The door seal is glued with transparent heat resistant silicone (order number 60375) around the radii on the corners and long distances in between. Should the door seal be exchanged then all the silicone must be removed by using a knife. Clean the door tracks and any silicone particles. Make sure when placing the new seal that it is completely in the frame. The seal needs to be pressed around the connecting piece on the top and bottom and in front of the oven with a broach so that it can "breathe". The door seal is a spare part and can be ordered under the number 38604 as cut goods 2,4 m long. Please notice the assembly instructions how to replace the seal.



Part: fan wheel

Part-Number: 33862

The manufacturer tested the fan wheel for imbalance. Keep away any direct heat from the fan wheel for e.g.. Blow lamps, otherwise the wheel will not run smoothly. An imbalance of the wheel will damage the motor and yield unsatisfactory baking results. The fan wheel is attached to the motor shaft and a fan wheel removal device must be used when replacing it. At any sign of imbalance the fan wheel must be replaced to prevent further damage.



Part: heater 3000 W

Part-Number: 34960

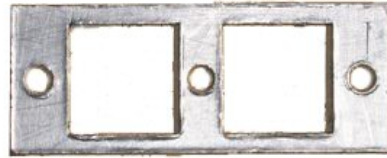
Warning! The heater must not be removed while hot. TIP: Treat the threaded bolts (heater flansh) of the hot heaters with cooling spray. Loosen the bolts. Replace the heater seal when replacing the heater. Treat the hexagonal screws with thread-free before reinserting. This prevents the screws from heat damage and not loosening again.



Part: seal heater

Part-Number: 36117

When replacing the ring heater the seal must be replaced as well.



Part: blind plug stainless steel

Part-Number: 26291

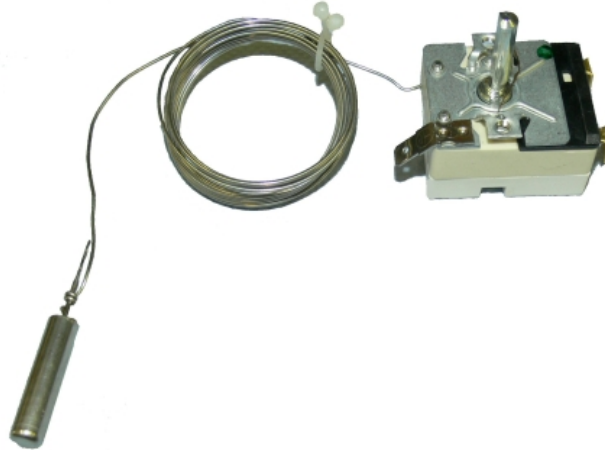
The blind plug is applied for devices without ProClean.



Part: capillary tube regulator

Part-Number: 37981

The thermostat measures the oven temperature. The fluid in the capillary tube measures the temperature. Be sure not to kink the capillary tube when placing it the result will be a false reading or interruption. Insulate the capillary tube on critical spots (e.g. circuit board) with silicone hose article number 40074.



Part: steam pipe connection

Part-Number: 02524

Depending on the water hardness the steaming supports must be descaled on a regular basis. Recommend to your customer to use a water softening system. When installing it is important that the steaming supports be secured in the correct direction showing in the direction of the "Fan wheel centre".



Part: steam pipe connection B8-EM

Part-Number: 27384

The steaming pipe sprays the pre-set amount of water from the operator directly in the middle of the fan wheel. By the turning of the fan wheel the moisture is spread evenly around the baking chamber and enhances shine and volume to the baking product. Steaming is always right after loading the oven. When installing the steaming pipe note the following! 1. Screw the counter nut to the middle of the thread. Otherwise the pipe will be fastened too deeply into the supports. The water flow is minimized or completely blocked. 2. Control the firm placement. Always use tools for installation.



Part: sealing plate

Part-Number: 04800

The sealing plate secures the motor shaft. Pull the motor first when installing and the sealing plate at the end.



Part: seal motor shaft

Part-Number: 105206

replaced by 34047



Part: seal motor shaft

Part-Number: 34047

The motor shaft seal is a clean lead and seal against moisture at the back of the oven which could lead to disturbances. Therefore the following must be observed: Tighten the sealing plate after the motor is fastened, otherwise the motor shaft seal on the motor shaft is not guaranteed. This motor shaft seal must be replaced with each motor installation.



Service manual

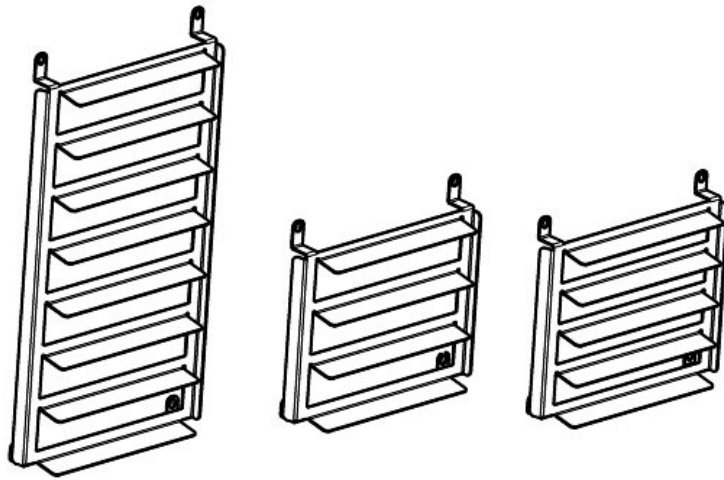
tray runners Euromat B8-EM 400V 50Hz

Version:

Ident:

Series:

Part-Number:



Chapter

- 100583 - tray runners complete Euromat B8-EM 400V 50Hz - V:
- 100584 - tray runners complete Euromat B8-EM 400V 50Hz - V:
- 102294 - tray runners complete USA design Euromat B8-EM 400V 50Hz - V:

- 100583 - tray runners B8-EM complete
- 100584 - tray runners B10-EM complete
- 102294 - tray runners B8-EM complete USA design

Part: tray runners B8-EM complete

Part-Number: 100583

Part: tray runners B10-EM complete

Part-Number: 100584

Part: tray runners B8-EM complete USA design

Part-Number: 102294

Service manual

tray runners complete Euromat B8-EM 400V 50Hz

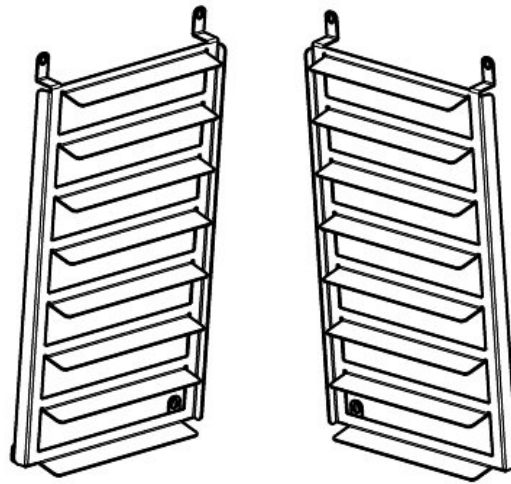
Version:

Ident:

Series:

Part-Number: 100583

This part can be ordered.



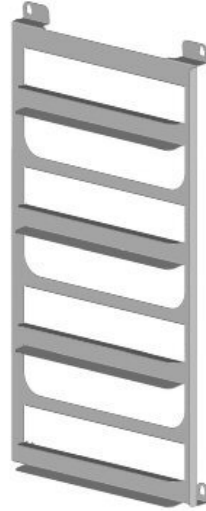
Chapter

104490 - tray runners right, 8 trays (steam pipe / ATV)

104491 - tray runners left, 8 trays (steam pipe / ATV)

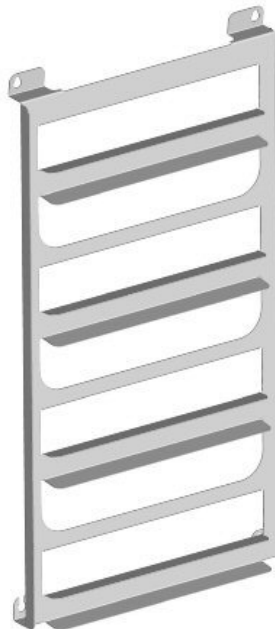
Part: tray runners right, 8 trays (steam pipe / ATV)

Part-Number: 104490



Part: tray runners left, 8 trays (steam pipe / ATV)

Part-Number: 104491



Service manual

tray runners complete Euromat B8-EM 400V 50Hz

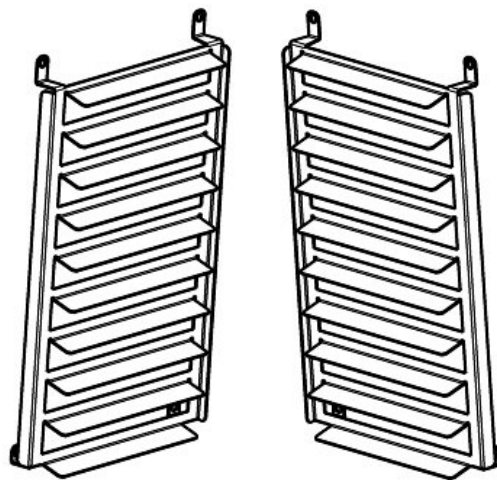
Version:

Ident:

Series:

Part-Number: 100584

This part can be ordered.



Chapter

104494 - tray runners right, 10 trays (steam pipe)

104495 - tray runners left, 10 trays (steam pipe)

Part: tray runners right, 10 trays (steam pipe)

Part-Number: 104494



Part: tray runners left, 10 trays (steam pipe)

Part-Number: 104495



Service manual

tray runners complete USA design Euromat B8-EM 400V 50Hz

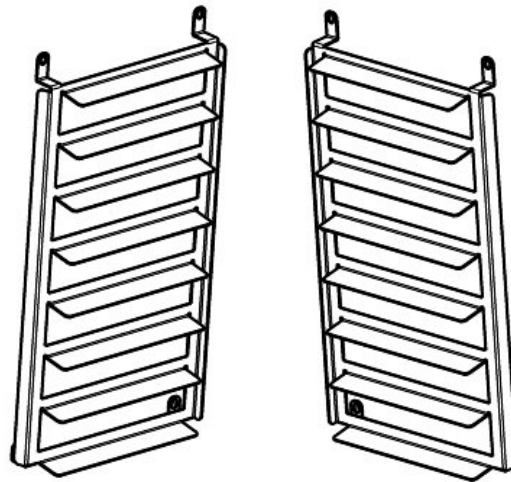
Version:

Ident:

Series:

Part-Number: 102294

This part can be ordered.



Chapter

104498 - tray runners B8-EM right; model USA

104499 - tray runners B8-EM left; model USA

Part: tray runners B8-EM right; model USA

Part-Number: 104498



Part: tray runners B8-EM left; model USA

Part-Number: 104499



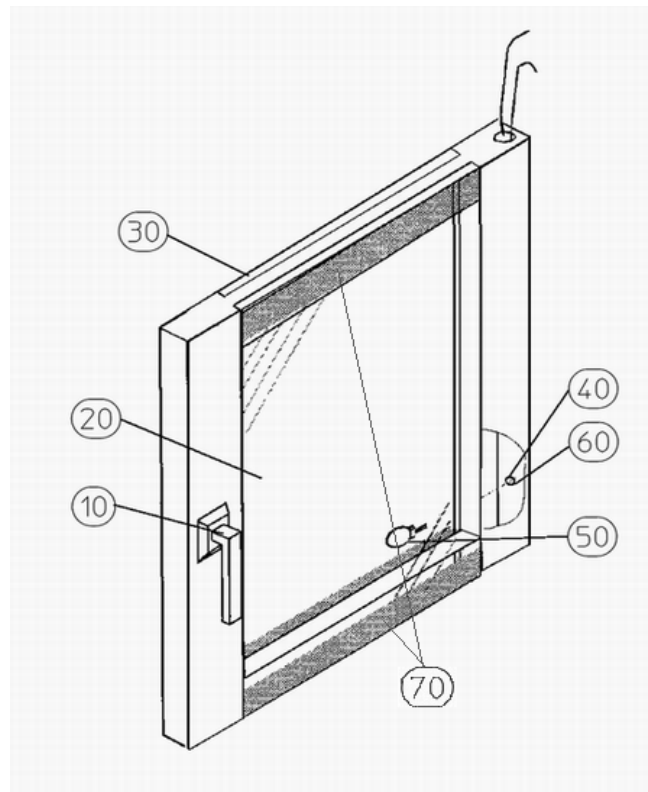
Service manual door Euromat B8-EM 400V 50Hz

Version:

Ident:

Series:

Part-Number:



Chapter

door handle Euromat B8-EM 400V 50Hz - V:
104837 - sealing pane Euromat B8-EM 400V 50Hz - V:
viewing glass Euromat B8-EM 400V 50Hz - V:

- [040] - 38642 - halogen sockets
- [050] - 101731 - halogen lamp 12V 10W
- [060] - 34312 - porcelain clamp
- [070] - 38155 - rubber-metal buffers

Part: halogen sockets

Part-Number: 38642



Part: halogen lamp 12V 10W

Part-Number: 101731

When changing the halogen lamps please make sure that the lamps do not come in contact with hand sweat. Hand sweat will burn into the glass bulb and reduces the life of the halogen lamp. Please use the appropriate gloves.



Part: porcelain clamp

Part-Number: 34312

The porcelain clamp can not be chipped or damaged. Ensure the halogen lamps are secure.



Part: rubber-metal buffers

Part-Number: 38155

Is fixed between door glass outside and sealing pane.

Service manual door handle Euromat B8-EM 400V 50Hz

Version:

Ident:

Series:

Part-Number:



Chapter

2500-402-043 - door handle left complete Euromat B8-EM 400V 50Hz - V:

2500-402-042 - door handle right complete Euromat B8-EM 400V 50Hz - V:

Service manual

door handle left complete Euromat B8-EM 400V 50Hz

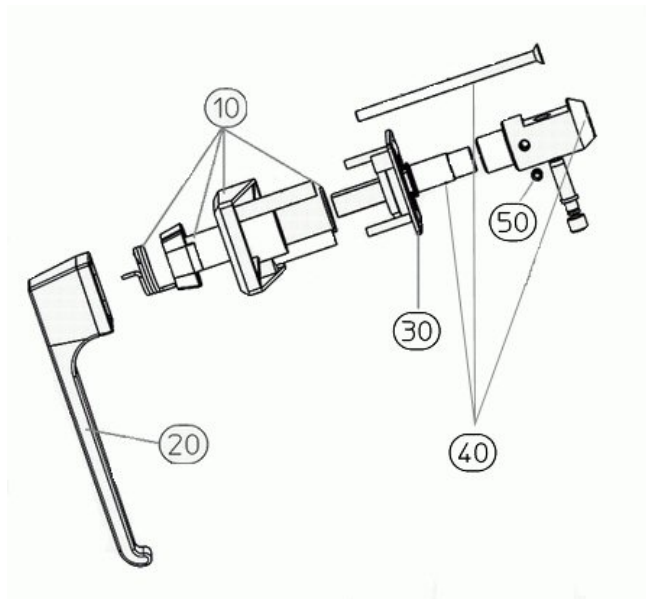
Version:

Ident:

Series:

Part-Number: 2500-402-043

This part can be ordered.



Chapter

31294 - [010] handle element TS left complete assembled Euromat B8-EM 400V 50Hz - V:2.00

2500-402-043 - door handle EM left complete

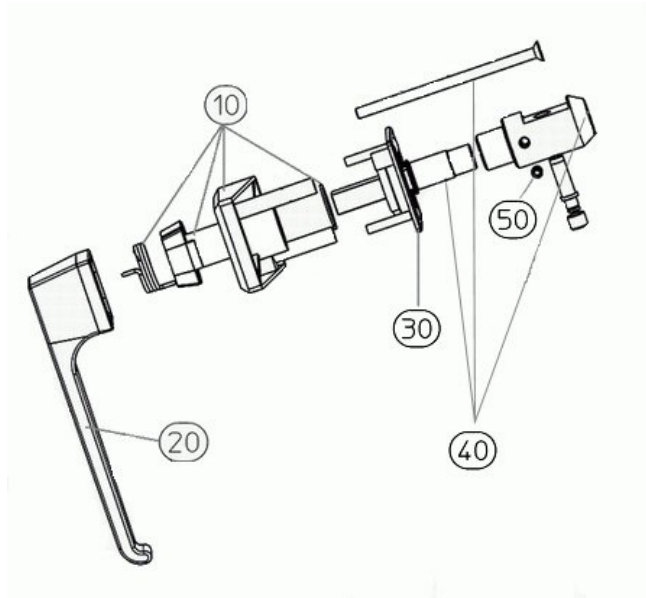
[020] - 103685 - door handle

[030] - 38152 - counterpiece

[050] - 42725 - threaded pin M8x8 DIN 913

Part: door handle EM left complete

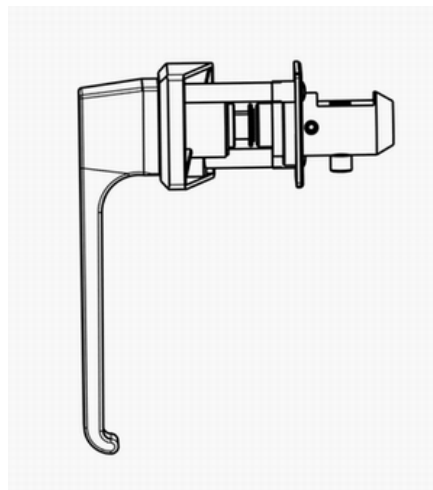
Part-Number: 2500-402-043



Part: door handle

Part-Number: 103685

When working on the door is important to note that the temperature can reach to the glass plate over 60 ° C, you can burn yourself! Generally, when working on powered components, must be accessible for servicing a network separation to be made.



Part: counterpiece

Part-Number: 38152



Part: threaded pin M8x8 DIN 913

Part-Number: 42725



Service manual

[010] handle element TS left complete assembled Euromat B8-EM 400V 50Hz

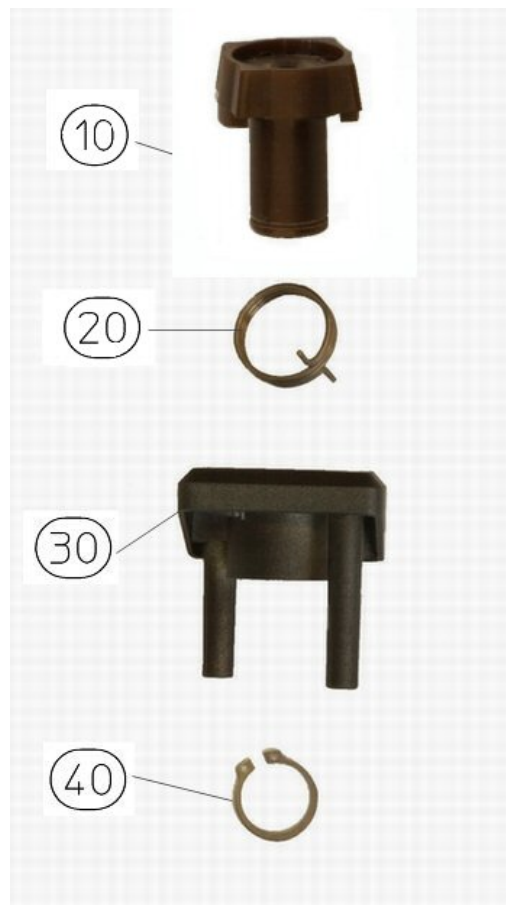
Version: 2.00

Ident:

Series:

Part-Number: 31294

This part can be ordered.



Chapter

- 31294 - handle element left assembled
- [010] - 36715 - connector piece
- [020] - 42371 - door handle spring, left-hinged
- [030] - 42377 - support
- [040] - 42692 - retainer ring

Part: handle element left assembled

Part-Number: 31294



Part: connector piece

Part-Number: 36715

The connecting piece serves to set the necessary pull emergency of the handle. The plastic of the connecting piece must not be damaged. e.g. creasing from door spring. Damage can cause early locking of the door spring. When setting ensure that the handle remains in a horizontal position on its own otherwise the setting is too loose. Just as in closing the door handle must remain in a vertical position otherwise the setting is too stiff.



Part: door handle spring, left-hinged

Part-Number: 42371

Note when installing if a right or left door spring should be used. The door spring can not be damaged. Adjust the spring when first installing to the works position. Incorrect positioning causes spring hardening.



Part: support

Part-Number: 42377



Part: retainer ring

Part-Number: 42692

To install/remove the retaining ring use a retaining ring gripper.



Service manual door handle right complete Euromat B8-EM 400V 50Hz

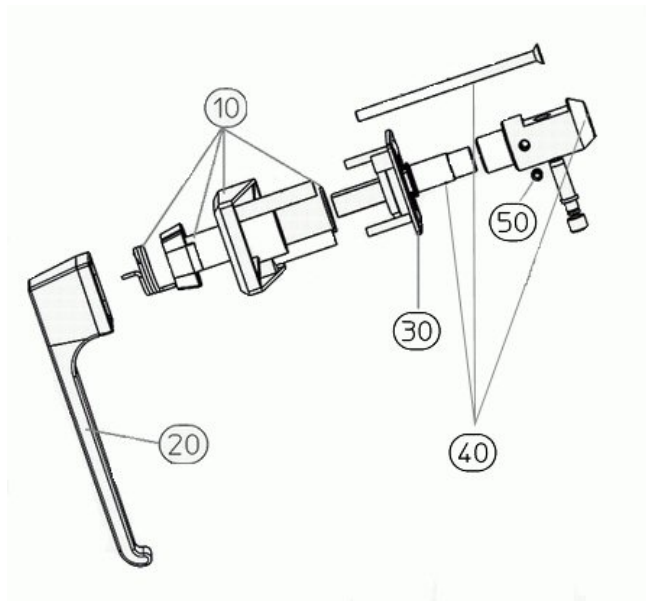
Version:

Ident:

Series:

Part-Number: 2500-402-042

This part can be ordered.



Chapter

31204 - [010] handle element TS right complete assembled Euromat B8-EM 400V 50Hz - V:

2500-402-042 - door handle EM right complete

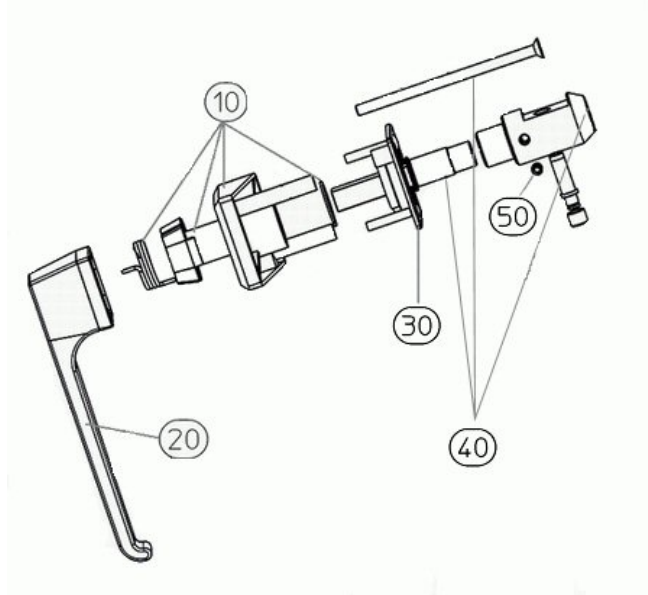
[020] - 103685 - handle

[030] - 38152 - counterpiece

[050] - 42725 - threaded pin M8x8 DIN 913

Part: door handle EM right complete

Part-Number: 2500-402-042



Part: handle

Part-Number: 103685



Part: counterpiece

Part-Number: 38152



Part: threaded pin M8x8 DIN 913

Part-Number: 42725



Service manual

[010] handle element TS right complete assembled Euromat B8-EM 400V 50Hz

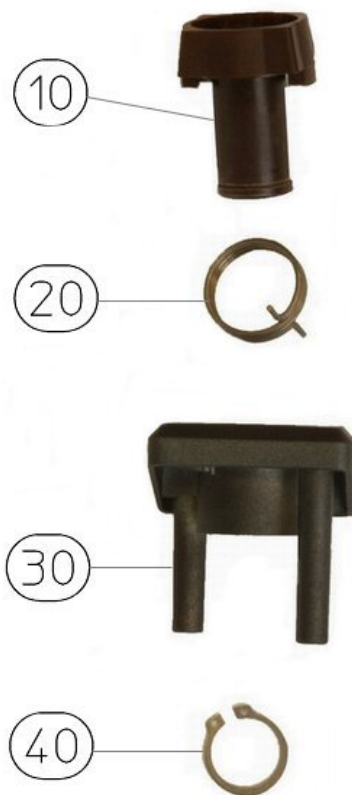
Version:

Ident:

Series:

Part-Number: 31204

This part can be ordered.



Chapter

31204 - handle element right assembled

[010] - 36715 - connector piece

[020] - 42373 - door handle spring, right-hinged

[030] - 42377 - support

[040] - 42692 - retainer ring

Part: handle element right assembled

Part-Number: 31204



Part: connector piece

Part-Number: 36715

The connecting piece serves to set the necessary pull emergency of the handle. The plastic of the connecting piece must not be damaged. e.g. creasing from door spring. Damage can cause early locking of the door spring. When setting ensure that the handle remains in a horizontal position on its own otherwise the setting is too loose. Just as in closing the door handle must remain in a vertical position otherwise the setting is too stiff.



Part: door handle spring, right-hinged

Part-Number: 42373

Note when installing if a right or left door spring should be used. The door spring can not be damaged. Adjust the spring when first installing to the works position. Incorrect positioning causes spring hardening.



Part: support

Part-Number: 42377



Part: retainer ring

Part-Number: 42692

To install/remove the retaining ring use a retaining ring gripper.



Service manual sealing pane Euromat B8-EM 400V 50Hz

Version:

Ident:

Series:

Part-Number: 104837

This part can be ordered.

Chapter

104837 - sealing pane B8 EM

Part: sealing pane B8 EM

Part-Number: 104837

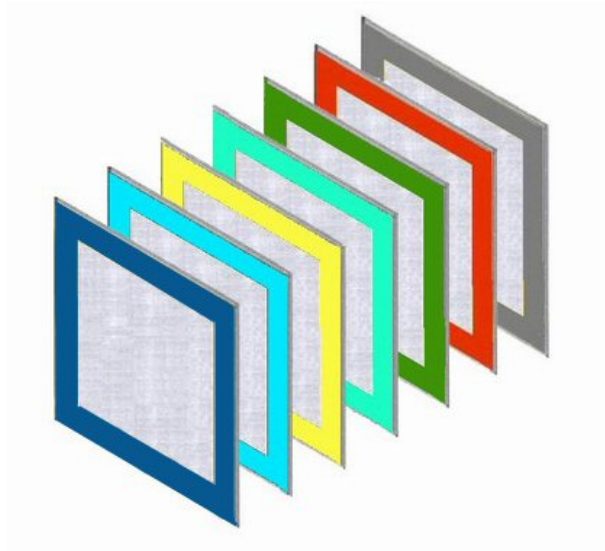
Service manual viewing glass Euromat B8-EM 400V 50Hz

Version:

Ident:

Series:

Part-Number:



Chapter

25028 - ball catch MS

[010] - 104312 - door glass outside EUROMAT grey

[020] - 31036 - door glass outside EUROMAT red

[030] - 31033 - door glass outside EUROMAT green

[040] - 31032 - door glass outside EUROMAT turquoise green

[050] - 31034 - door glass outside EUROMAT yellow

[060] - 31037 - door glass outside EUROMAT turquoise blue

[070] - 31055 - door glass outside EUROMA saffron

[080] - 104322 - door glass outside EUROMAT dark-blue

Part: ball catch MS

Part-Number: 25028

The ball catch is a holder between the sealing and viewing pane. The ball catch can not be justified and on one side the sealing pane is glued with heat resistant Pactan. The tension level can be adjusted with a screwdriver.



Part: door glass outside EUROMAT grey

Part-Number: 104312

special color. not a RAL color



Part: door glass outside EUROMAT red

Part-Number: 31036

RAL 3002



Part: door glass outside EUROMAT green

Part-Number: 31033

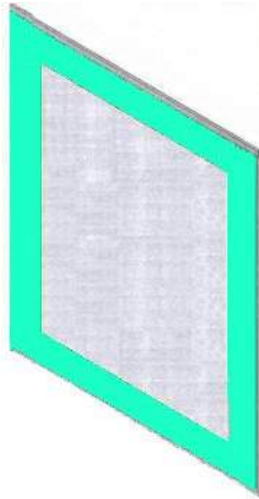
RAL 6024



Part: door glass outside EUROMAT turquoise green

Part-Number: 31032

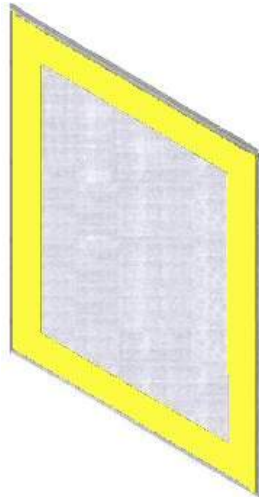
RAL 6016



Part: door glass outside EUROMAT yellow

Part-Number: 31034

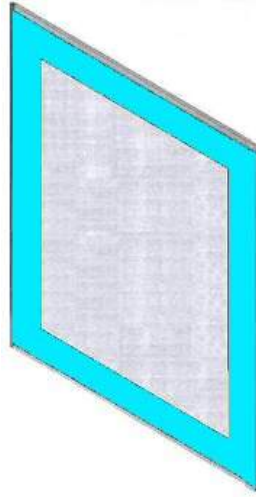
RAL 1021



Part: door glass outside EUROMAT turquoise blue

Part-Number: 31037

RAL 5018



Part: door glass outside EUROMA saffron

Part-Number: 31055

RAL 1017



Part: door glass outside EUROMAT dark-blue

Part-Number: 104322

special color,PMS296, especially for OEM-version Do-Sys



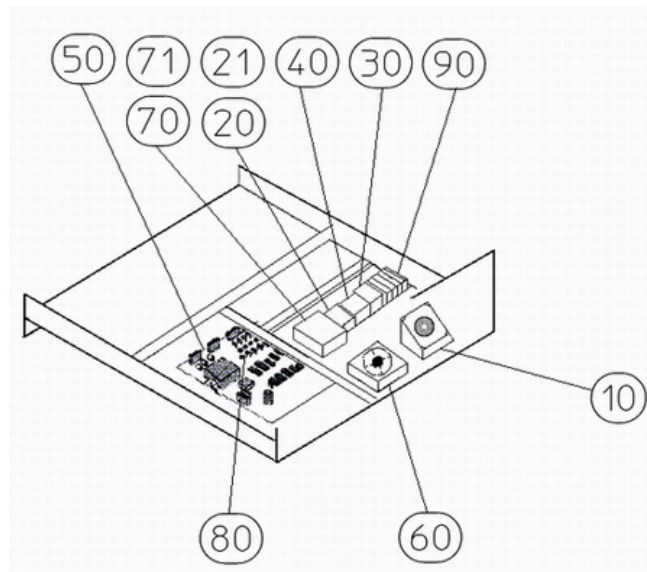
Service manual electric slide EM IS Euromat B8-EM 400V 50Hz

Version:

Ident:

Series:

Part-Number:



Chapter

clamp with fuse Euromat B8-EM 400V 50Hz - V:

- [010] - 38400 - loudspeaker
- [020] - 33126 - relay main switch
- [030] - 33884 - relay main switch
- [040] - 33859 - reversing contactor
- [050] - 101106 - power board
- [060] - 33906 - axial blower 15W
- [070] - 100840 - transformer
- [080] - 34666 - rectifier

Part: loudspeaker

Part-Number: 38400

The loud speaker signal serves as an acoustic signal. For example notification is given for "temperature reached". "end of program". As well as when opening the door a short gong will sound. If the gong does not work, first of all check the appliance settings. You can reach the menu point "Gong" by going to "Settings - Appliance Settings - Gong". Here you can set the volume and intervals of the sound. If the volume and interval is set to 0 no acoustic signal will be given. Test the gong, by going to the PC-Tool - Function Test. Warning! The PC-Tool- Function test is an endurance test and is not protected from overload!



Part: relay main switch

Part-Number: 33126

If the safety temperature limit (STB) activates, the main safety switch will not switch on. Neither will it switch on when the internal fuses of the power element or the external fuses are defective. The oven will not operate. As soon as the STB is deactivated or the power supply continued, the main safety switch turns on and the power will be forwarded.



Part: relay main switch

Part-Number: 33884

The contactor switches the heater on/off.



Part: reversing contactor

Part-Number: 33859

The turning contactor is used for changing the rotation of the motor. This effectuates a constant distribution of the air.



Part: power board

Part-Number: 101106

Disconnect power before beginning work. This article is fully prepared for servicing purposes. Please read the appropriate "Article Documents". When replacing the electronic circuit board, electrostatic can damage the circuit board and its components. Ensure before handling the electrical circuit board that a grounded metal frame discharges the electrostatic. The electrical circuit board is available as a service circuit board in a complete version under the Order Number 101106 and can also be used in other appliance models. On the circuit board you will find 3 fuses. F2 output L1 (4A tr); F3 output N (4A tr); F4 output transformer 24, 12, 5 V (1,5A tr). The circuit board has Eeprom with each current software update and an 8 pole Dip- switch (configurations switch). Attention must be given to which switch the Dip- switch is actively switched. The various switch settings can be found in the assembly instructions.



Part: axial blower 15W

Part-Number: 33906

The axial blower regulates the temperature in the installation room. Warm air is blown outside and cool air blown inside the room. Please note the arrow direction of the air flow when installing the axial flow fan.



Part: transformer

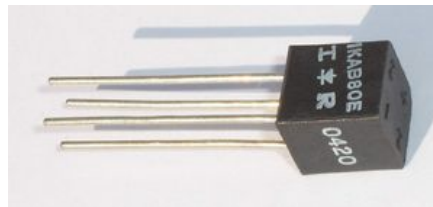
Part-Number: 100840

The lighting transformer provides power to the baking chamber. The interior lighting is (2x12V/20W) Please note the wiring when removing/inserting. The wire should not come in contact with the circuit board. This may cause sporadic interference with the electronics.



Part: rectifier

Part-Number: 34666



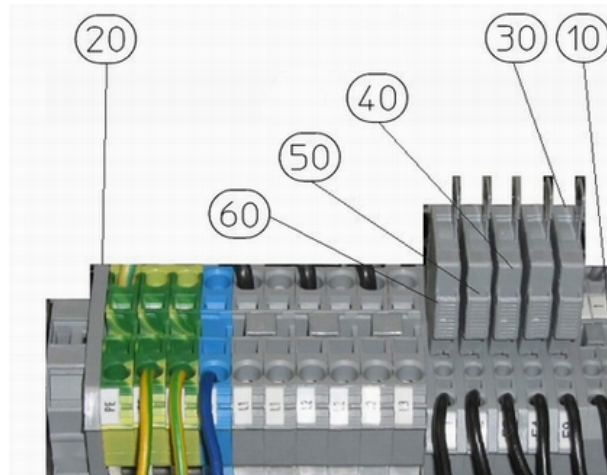
Service manual clamp with fuse Euromat B8-EM 400V 50Hz

Version:

Ident:

Series:

Part-Number:



Chapter

- [010] - 34101 - base clamp
- [020] - 34102 - finishing plate
- [030] - 34103 - safety plug
- [040] - 35152 - micro-fuse 6,3A 5x20
- [050] - 34753 - micro-fuse 0,5A 5x20

Part: base clamp

Part-Number: 34101



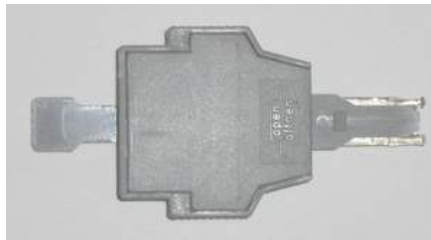
Part: finishing plate

Part-Number: 34102



Part: safety plug

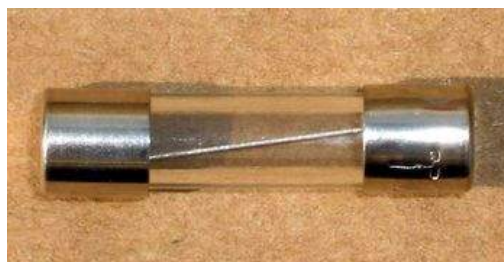
Part-Number: 34103



Part: micro-fuse 6,3A 5x20

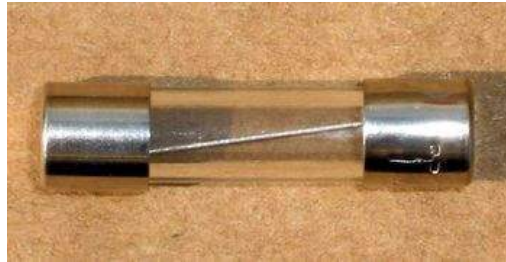
Part-Number: 35152

The micro fuse serves 8/1 on the triac plate as security for X. (Phase for cascade)



Part: micro-fuse 0,5A 5x20

Part-Number: 34753



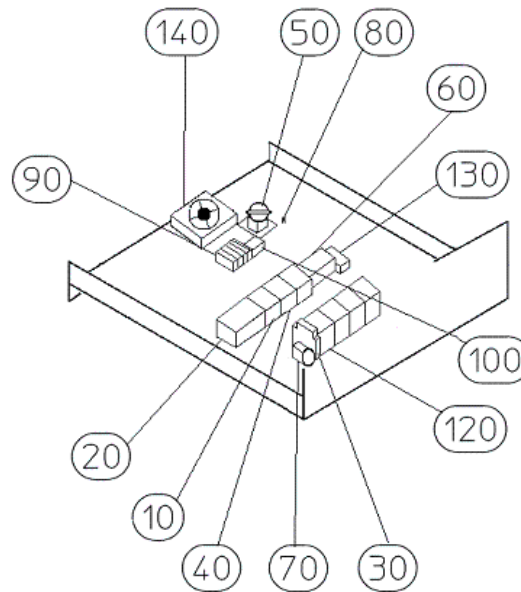
Servicemanual electric slide EM manual Euromat B8-EM 400V 50Hz

Version:

Ident:

Series:

Part-Number:



Chapter

clamp with fuse Euromat B8-EM 400V 50Hz - V:

- [010] - 33126 - relay main switch
- [020] - 33859 - reversing contactor
- [030] - 33733 - time delay relay
- [040] - 33884 - relay main switch
- [050] - 36304 - cam switch
- [060] - 100840 - transformer
- [070] - 33602 - buzzer
- [080] - 34666 - rectifier
- [100] - 33372 - suppressor element
- [130] - 33610 - socket 8-pole
- [140] - 33906 - axial blower 15W

Part: relay main switch

Part-Number: 33126

If the safety temperature limit (STB) activates, the main safety switch will not switch on. Neither will it switch on when the internal fuses of the power element or the external fuses are defective. The oven will not operate. As soon as the STB is deactivated or the power supply continued, the main safety switch turns on and the power will be forwarded.



Part: reversing contactor

Part-Number: 33859

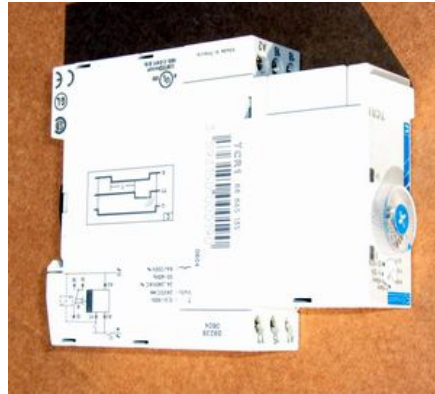
The turning contactor is used for changing the rotation of the motor. This effectuates a constant distribution of the air.



Part: time delay relay

Part-Number: 33733

The time relay controls the motor idle time after steaming.



Part: relay main switch

Part-Number: 33884

The contactor switches the heater on/off.



Part: cam switch

Part-Number: 36304

The cam switch is a timed controlled direction changer of the fanwheel and controls the turning contactor.



Part: transformer

Part-Number: 100840

The lighting transformer provides power to the baking chamber. The interior lighting is (2x12V/20W) Please note the wiring when removing/inserting. The wire should not come in contact with the circuit board. This may cause sporadic interference with the electronics.



Part: buzzer

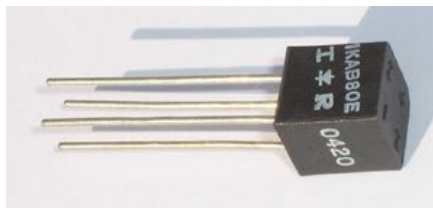
Part-Number: 33602

The buzzer is controlled by 230V. It gives an acoustic signal for example at the end of the baking time.



Part: rectifier

Part-Number: 34666



Part: suppressor element

Part-Number: 33372

The suppressor element covers the solenoid valve. It prevents EMV disturbances to other components in the net.



Part: socket 8-pole

Part-Number: 33610

Attention this socket is used in connection with the auxiliary relay 33581 with special voltage 200V.



Part: axial blower 15W

Part-Number: 33906

The axial blower regulates the temperature in the installation room. Warm air is blown outside and cool air blown inside the room. Please note the arrow direction of the air flow when installing the axial flow fan.



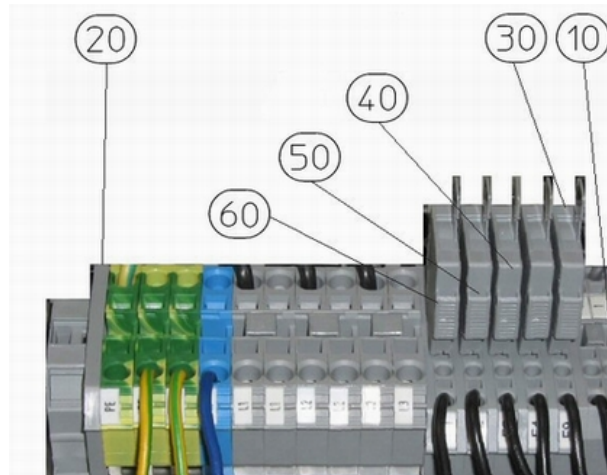
Service manual clamp with fuse Euromat B8-EM 400V 50Hz

Version:

Ident:

Series:

Part-Number:



Chapter

- [010] - 34101 - base clamp
- [020] - 34102 - finishing plate
- [030] - 34103 - safety plug
- [040] - 35152 - micro-fuse 6,3A 5x20
- [050] - 34753 - micro-fuse 0,5A 5x20

Part: base clamp

Part-Number: 34101



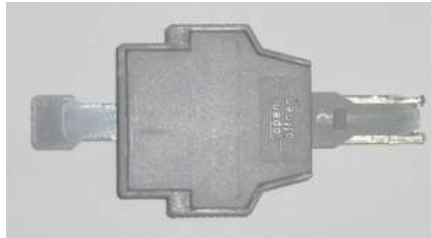
Part: finishing plate

Part-Number: 34102



Part: safety plug

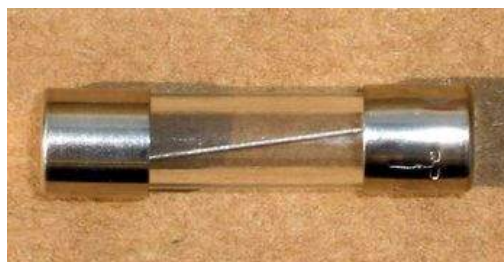
Part-Number: 34103



Part: micro-fuse 6,3A 5x20

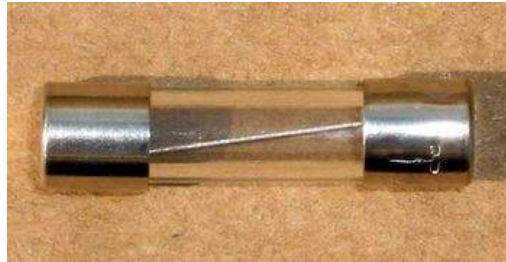
Part-Number: 35152

The micro fuse serves 8/1 on the triac plate as security for X. (Phase for cascade)



Part: micro-fuse 0,5A 5x20

Part-Number: 34753



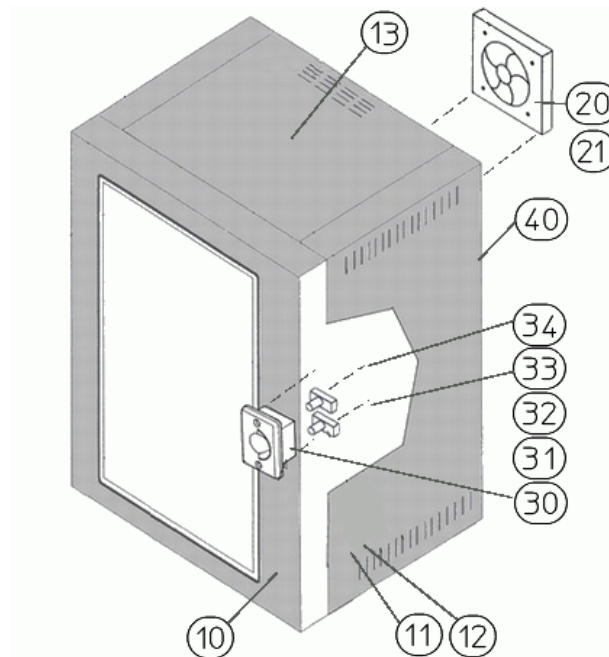
Service manual frame Euromat B8-EM 400V 50Hz

Version:

Ident:

Series:

Part-Number:



Chapter

- [010] - 28000 - side part B8-EM
- [011] - 31275 - front fitting
- [012] - 36219 - cover cap, plug
- [013] - 06117 - cover EM
- [020] - 33906 - axial blower 15W
- [021] - 33973 - axial fan cover
- [030] - 37937 - door latch plate in oven wall/frame
- [031] - 30816 - door latch, right complete
- [032] - 30817 - door latch left complete
- [033] - 36000 - micro switch
- [034] - 39061 - micro switch
- [040] - 25014 - supply line 32A with CEE-plug

Part: side part B8-EM

Part-Number: 28000

Part: front fitting

Part-Number: 31275

Part: cover cap, plug

Part-Number: 36219

Plug for holes in the side wall.

Part: cover EM

Part-Number: 06117

Part: axial blower 15W

Part-Number: 33906

The axial blower regulates the temperature in the installation room. Warm air is blown outside and cool air blown inside the room. Please note the arrow direction of the air flow when installing the axial flow fan.



Part: axial fan cover

Part-Number: 33973

To avoid injury the axial fan cover must be installed correctly.



Part: door latch plate in oven wall/frame

Part-Number: 37937

Door blocks for ovens without electrical door closures/Pro Clean. The door blocks can be used for the right side or left side.



Part: door latch, right complete

Part-Number: 30816

This article has been replaced. Please use in case of service the article 105402. Complete right door blocks for oven with electrical door closure/Pro Clean (only E2).



Part: door latch left complete

Part-Number: 30817

This article has been replaced. Please use in case of service the article 105403. Complete left door blocks complete for oven with electrical closure/Pro Clean



Part: micro switch

Part-Number: 36000

Micro fuse with gold contact for door blocks. The micro fuse must be closed by locked door. It closes and opens the neutral lead. The micro fuse controls the following elements. Circulation pump Pro Clean. Solenoid valve ProClean. In the DIBAS the micro fuse is limited to the pulling movement (open/close) and the swing movement (open/close).



Part: micro switch

Part-Number: 39061

The micro fuse for door blocks with electrical door closures/Pro Clean switches the electrical door closure on for example the automatic self-cleaning program or door closure program is running.



Part: supply line 32A with CEE-plug

Part-Number: 25014



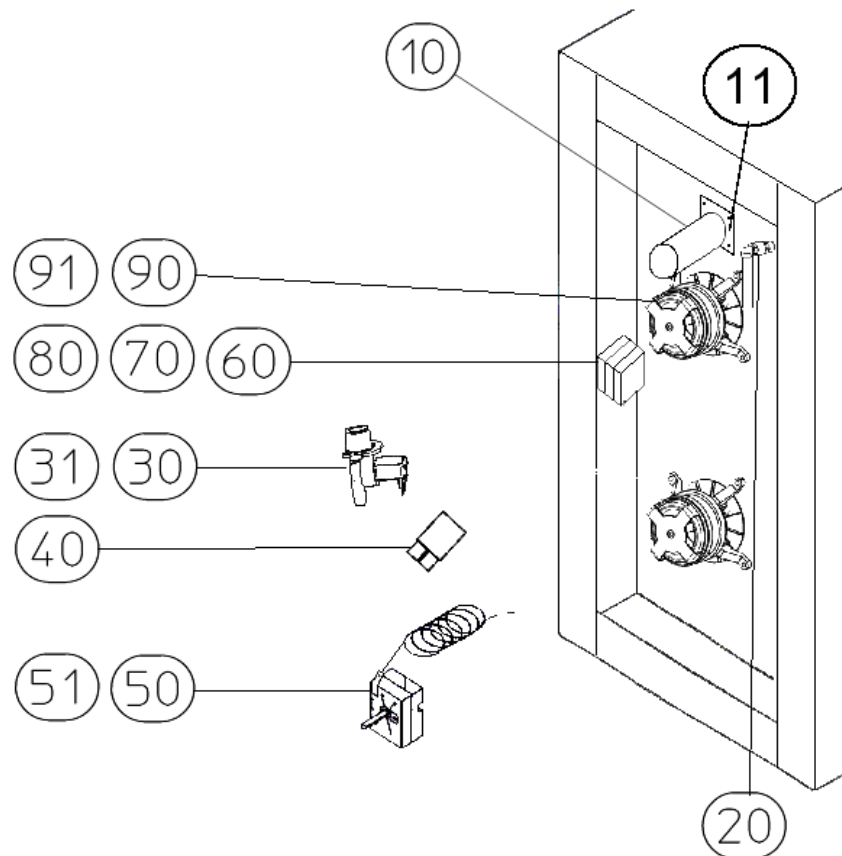
Service manual installation-room Euromat B8-EM 400V 50Hz

Version:

Ident:

Series:

Part-Number:



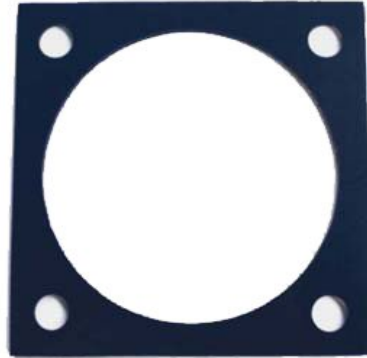
Chapter

exhaust air Euromat B8-EM 400V 50Hz - V:
steaming Euromat B8-EM 400V 50Hz - V:

- [011] - 02649 - silicone seal
- [011] - 9085-100-002 - drain seal
- [030] - 36116 - solenoid valve
- [040] - 36126 - water flow detector flow meter FH20
- [050] - 100627 - safety limit switch (+340°C)
- [060] - 34108 - clamp grey 3L 2.5qmm
- [070] - 34109 - clamp 3L blue 280-684
- [080] - 34110 - clamp 3L 2.5qmm 280-687
- [090] - 103578 - fan motor
- [091] - 34061H - motor
- [091] - 9020-110-002 - fan motor

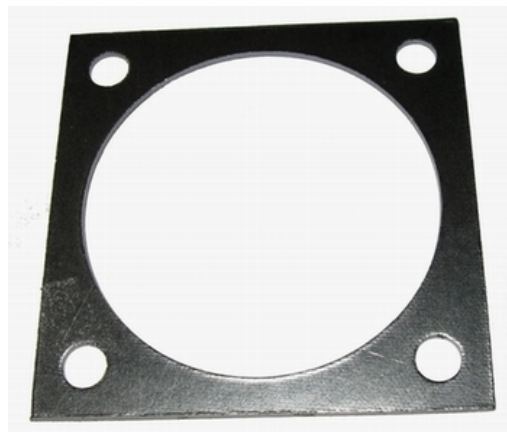
Part: silicone seal

Part-Number: 02649



Part: drain seal

Part-Number: 9085-100-002



Part: solenoid valve

Part-Number: 36116

It is necessary to clean the dirt sieve of the solenoid valve regularly. Particles in the water line will stick to the sieve and interrupt the water flow. Please note the maximum water pressure and other warnings from the data sheets regarding the water connection. The solenoid valve works with a flow pressure of 150 - 600 kPa. You can test the solenoid valve function in the PC - Tool - Test. Attention the test is a continued test and this function is not protected from overload.



Part: water flow detector flow meter FH20

Part-Number: 36126

The flow meter measures the water flow amount. When installing, pay attention to the polarity +/- of the impulse meter (Hall sensor).



Part: safety limit switch (+340°C)

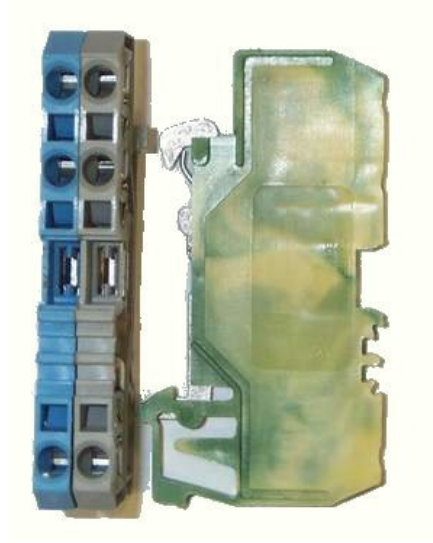
Part-Number: 100627

The safety temperature limit switch (STB) is activated at temperatures of -5°C (and lower) and $+329^{\circ}\text{C}$ (and higher). The oven will not operate when this is activated. The STB is part of the safety chain and can be manually re-set. Warning, when the STB is activated the cause must be resolved. Insulate the capillary tube (e.g. on the circuit board) on its critical spots with silicone hose Article number 40074.



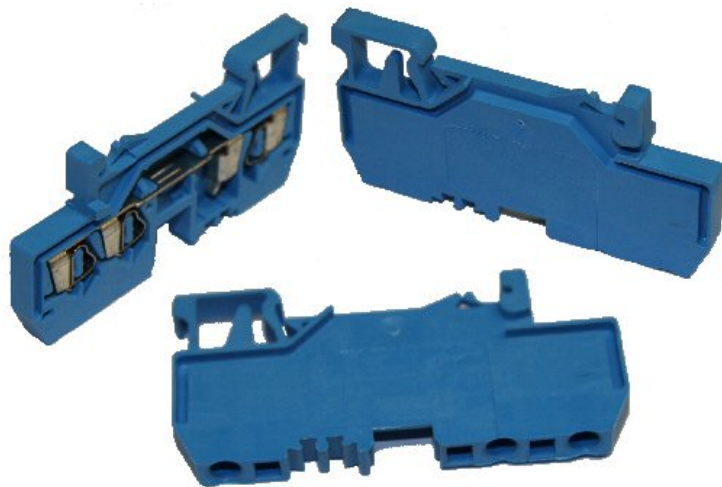
Part: clamp grey 3L 2.5qmm

Part-Number: 34108



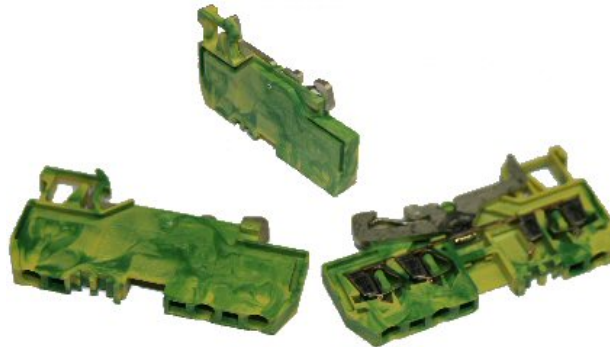
Part: clamp 3L blue 280-684

Part-Number: 34109



Part: clamp 3L 2.5qmm 280-687

Part-Number: 34110



Part: fan motor

Part-Number: 103578

replaced by 9020-110-002



Part: motor

Part-Number: 34061H



Part: fan motor

Part-Number: 9020-110-002

For improved baking results the Hanning Motor has two rotating directions and several speeds. In ovens with the IS Control the speed is regulated by the Triac setter. In ovens with a manual control the contactor regulates the speed. The motor is secured with 4 M 6 nuts. The distance sleeves screws that are fixed by locknuts must always have the same height. Tighten the nuts diagonally to avoid tension. The motor has a built in thermo protection (bimetal) that activates at 160° C and automatically resets when cooled down. When the motor protection is activated the motor function is interrupted. Note that you should avoid speeds under 3 in the baking programs. If the fan wheel doesn't move easily or is unbalanced the motor spool may overheat. The thermo safety of the motor will activate and the complete operation will be interrupted. Check the fan wheel for imbalancing. Replace the fan. If a new motor is installed a new motor shaft seal (article number 34047) must be used. Also, the counternuts must be diagonally fastened to avoid tension. The motor has a built in thermo protection (bimetal) that activates at 160° C and automatically resets when cooled down.



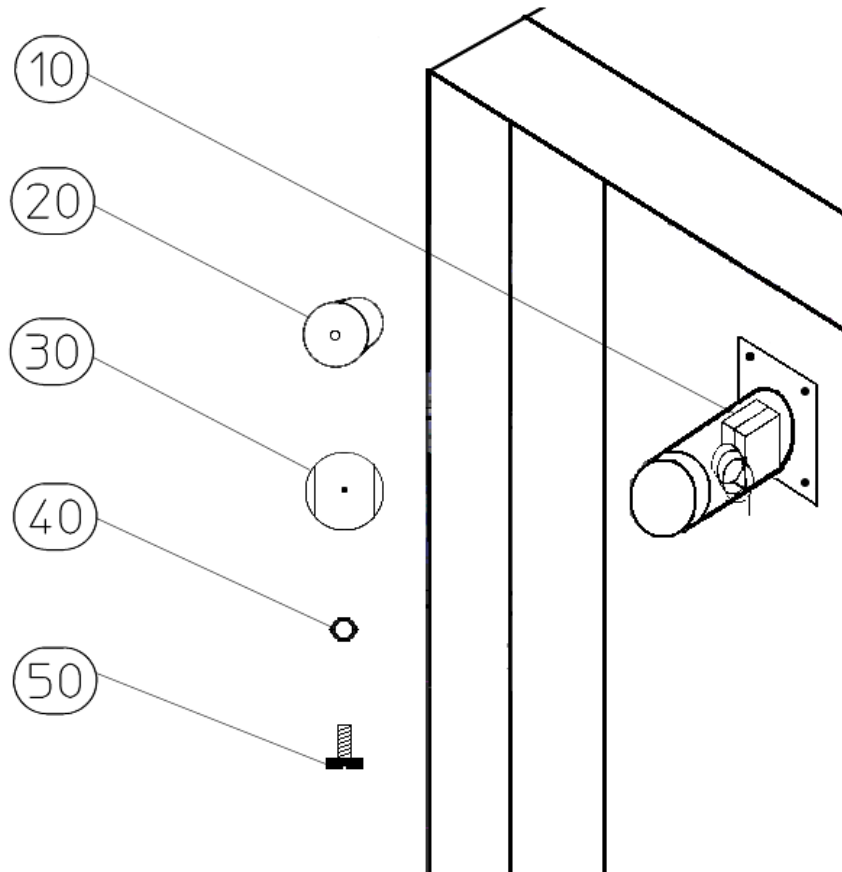
Service manual exhaust air Euromat B8-EM 400V 50Hz

Version:

Ident:

Series:

Part-Number:



Chapter

- [010] - 36030 - rotary solenoid
- [020] - 01080 - seal
- [030] - 00823 - exhaust flap
- [040] - 42010 - nut
- [050] - 42038 - cylinder head screw

Part: nut

Part-Number: 42010



Part: cylinder head screw

Part-Number: 42038



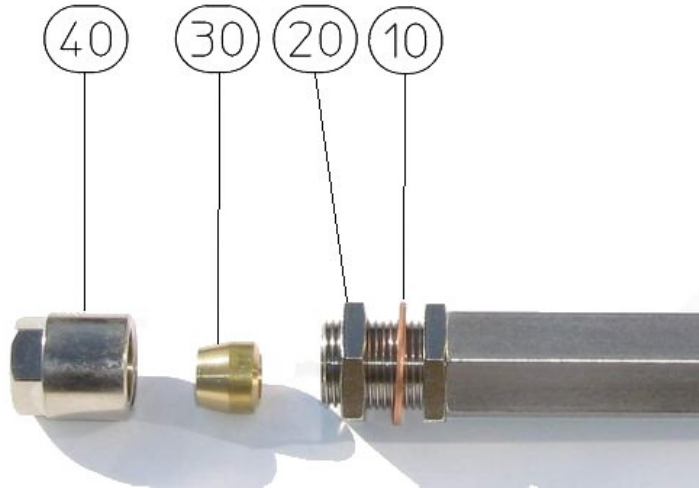
Service manual steaming Euromat B8-EM 400V 50Hz

Version:

Ident:

Series:

Part-Number:



Chapter

33560 - sealing ring copper

34581 - connecting nut

34582 - compression ring

34583 - counter nut

Part: sealing ring copper

Part-Number: 33560



Part: connecting nut

Part-Number: 34581



Part: compression ring

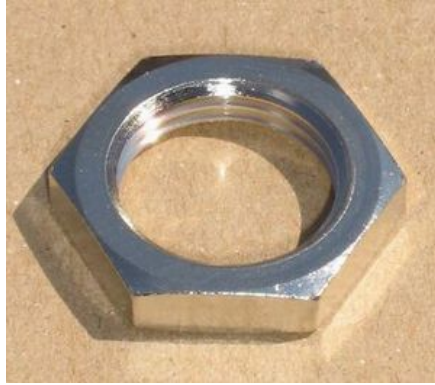
Part-Number: 34582



Part: counter nut

Part-Number: 34583

When tightening the counternut ensure that the already set steaming supports will not be disturbed.



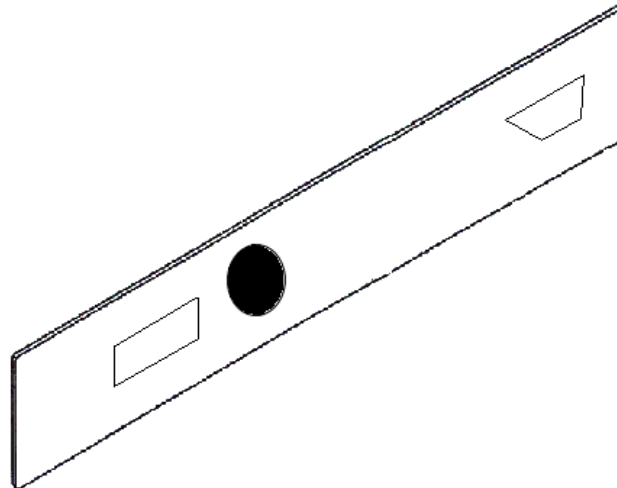
Service manual operating panel EM IS Euromat B8-EM 400V 50Hz

Version:

Ident:

Series:

Part-Number:



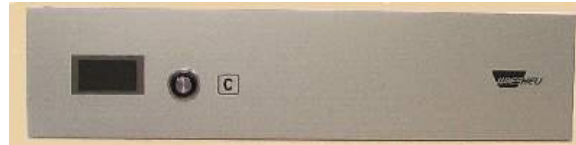
Chapter

- 104288 - operating panel including IS500
- 104779 - operating panel EUROMAT-EM-IS (OEM version)
- 105029 - operating panel EUROMAT-EM-IS
- 105232 - operating panel including IS500 (OEM version)

Part: operating panel including IS500

Part-Number: 104288

This article is fully prepared for servicing purposes. Read "Documents to article".



Part: operating panel EUROMAT-EM-IS (OEM version)

Part-Number: 104779

Operating panel with operating screen. OEM Version Do-Sys



Part: operating panel EUROMAT-EM-IS

Part-Number: 105029

Operating panel with operating screen. Standard edition. Color gray.

Part: operating panel including IS500 (OEM version)

Part-Number: 105232

Operating cover and operating screen and complete electronics. OEM-Version Do-Sys. This article is completely prepared for servicingn purposes. Read the "Documents to the Article".



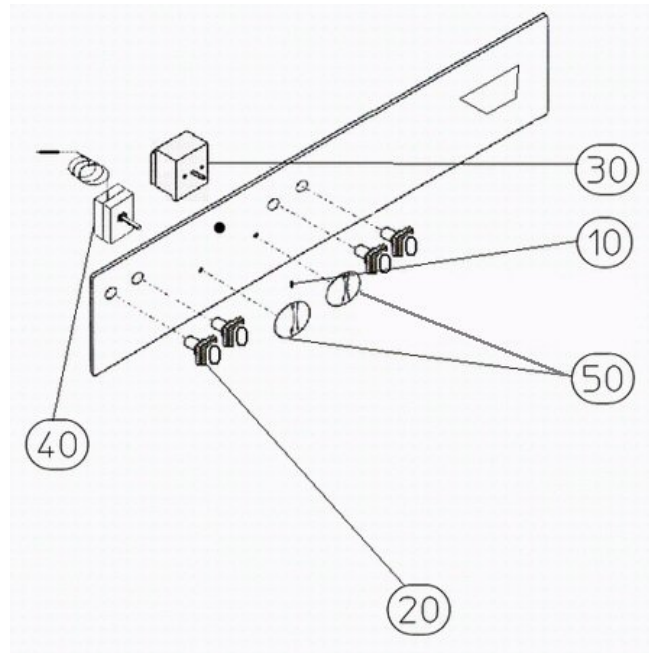
Service manual operating panel EM manual Euromat B8-EM 400V 50Hz

Version:

Ident:

Series:

Part-Number:



Chapter

- [010] - 33004 - control lamp yellow
- [020] - 103136 - key switch / notch switch
- [030] - 38696 - timer
- [040] - 37981 - capillary tube regulator
- [050] - 34862 - knob thermostat
- [070] - 103822 - operating panel EM-MAN (scale °C)
- [071] - 103602 - operating panel EM-MAN (scale °F)
- [072] - 103580 - operating panel EM-MAN (OEM version)

Part: control lamp yellow

Part-Number: 33004

The control lamp illuminates for as long as the heater heats. When the set temperature is reached the control lamp shuts off.



Part: key switch / notch switch

Part-Number: 103136



Part: timer

Part-Number: 38696

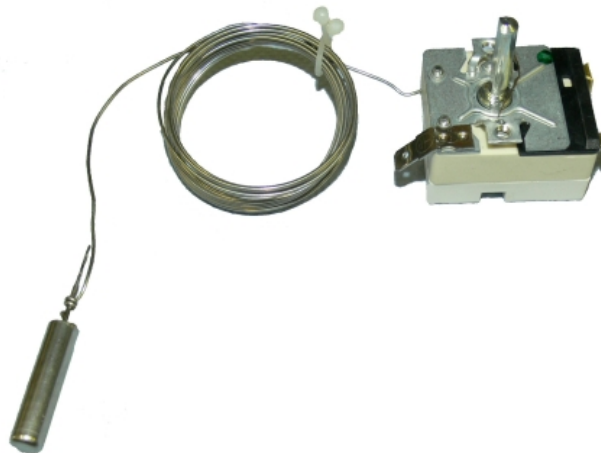
The timer switches the heater contact off. If a short time (1-20 mins) is set the timer is turned all the way to the end and then back to the required time.



Part: capillary tube regulator

Part-Number: 37981

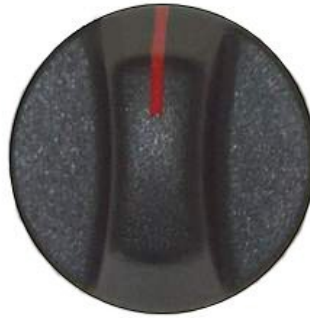
The thermostat measures the oven temperature. The fluid in the capillary tube measures the temperature. Be sure not to kink the capillary tube when placing it the result will be a false reading or interruption. Insulate the capillary tube on critical spots (e.g. circuit board) with silicone hose article number 40074.



Part: knob thermostat

Part-Number: 34862

Please note when ordering: Thermostat dial and timer dial have different connectors and are not compatible



Part: operating panel EM-MAN (scale °C)

Part-Number: 103822

Operating panel with operating screen. Temperature scale °C.



Part: operating panel EM-MAN (scale °F)

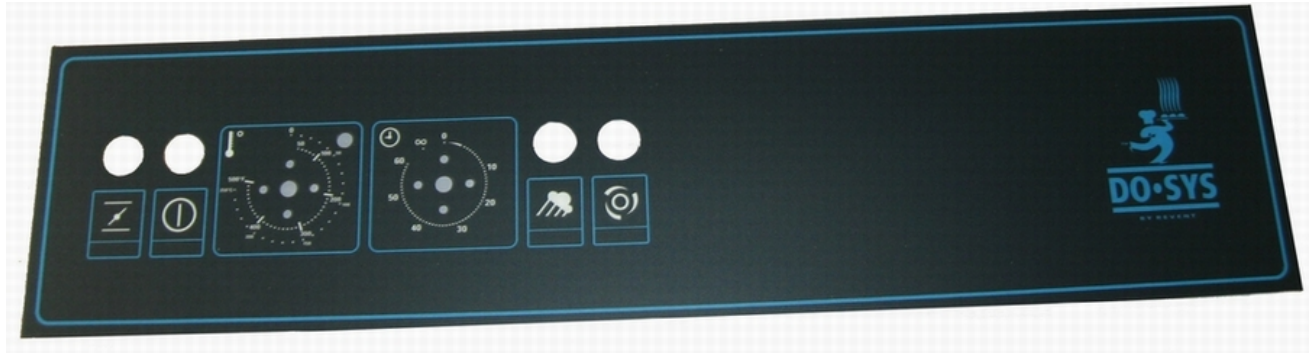
Part-Number: 103602

Operating panel with operating screen. Temperature scale in °F.

Part: operating panel EM-MAN (OEM version)

Part-Number: 103580

Operating panel with operating screen. OEM Version Do-Sys



Urheberrecht:

Das Urheberrecht an diesem Servicehandbuch verbleibt bei der WIESHEU GmbH. Dieses Servicehandbuch ist nur für autorisierte Servicepartner und dessen Personal bestimmt. Sie enthält Vorschriften und Hinweise, die weder vollständig noch teilweise vervielfältigt, verbreitet oder anderweitig mitgeteilt werden dürfen.

Alle Darstellungen, Zeichnungen, Bilder Texte und Angaben sind urheberrechtlich geschützt. Sie unterliegen den gewerblichen Schutzrechten.

Zu diesem Servicehandbuch:

Alle Abbildungen in diesem Dokument sollen die Verständlichkeit unterstützen. Die Abbildungen sind nicht maßstabsgerecht. Teilweise sind dem Originalprodukt ähnelnde Abbildungen dargestellt, die geringfügig abweichen können.

Achtung!

Vermeiden Sie Fehlfunktionen oder Beschädigungen durch falsche Ersatzteile. Wir empfehlen die ausschließliche Verwendung von WIESHEU-Original-Ersatzteilen.

Wiesheu GmbH
Daimlerstrasse 10
DE-71563 Affalterbach
Telefon: +49 (0)7144 / 3 03-0
Fax: +49 (0)7144 / 3 03-11
Service-Telefon: 0800-WIESHEU
E-Mail: info@wiesheu.de
www.wiesheu.de

Stand: 20.04.2011